



Generalitat de Catalunya
**Escola d'Administració Pública
de Catalunya**

**Ethics and legitimacy of institutions
solving wicked problems:
the Catalan elections during the COVID-19 crisis**

Ismael Peña-López

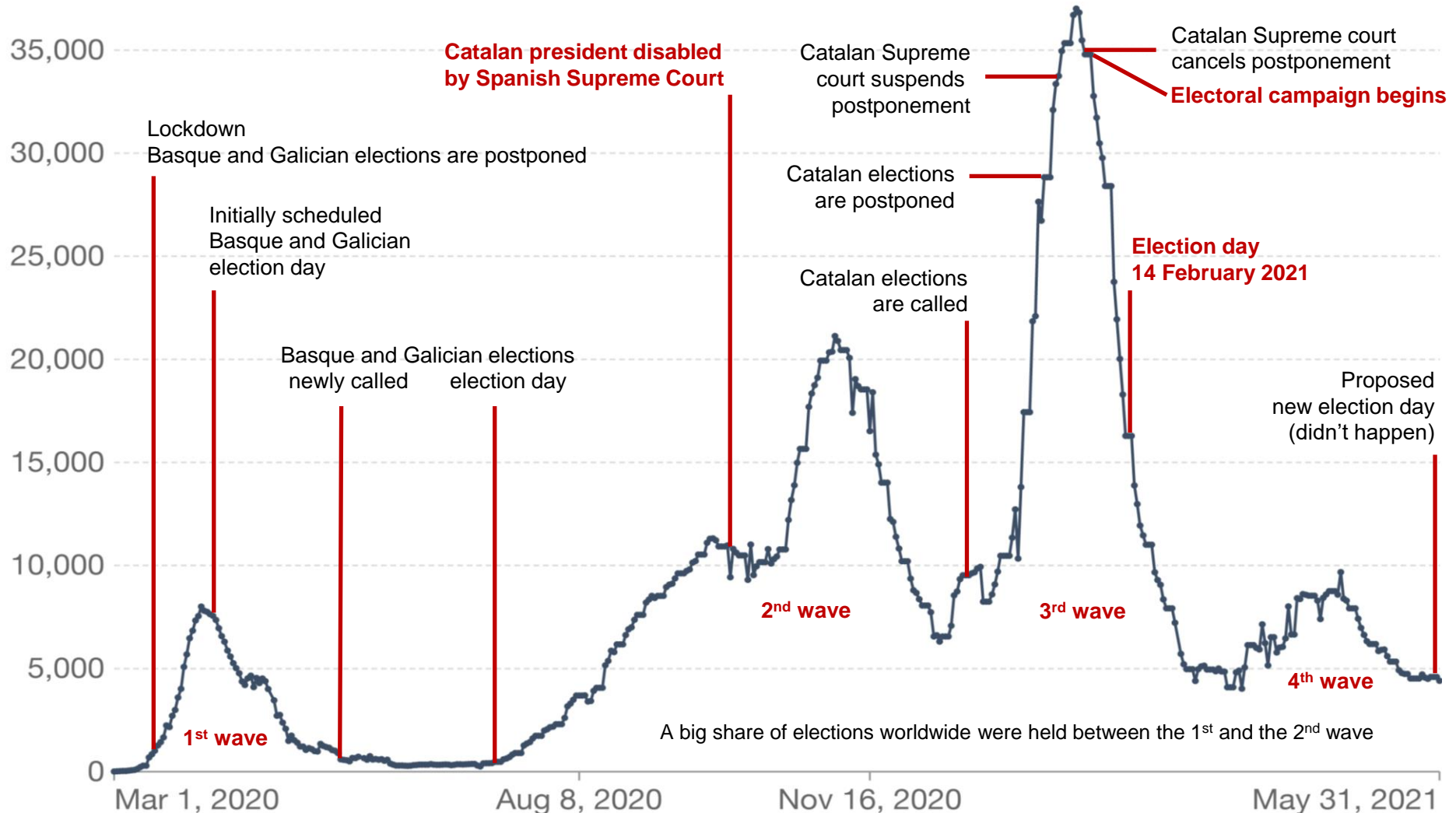
REDEM Workshop Reconstructing Democracy in Times
of Crisis: A Voter-Centred Perspective. Strengthening
Electoral Participation
Barcelona, 4 May 2022

Table of contents

- The problem: a wicked problem
- The approach to solutions:
 - Splitting the problem into smaller parts
 - Open Government
 - The Administration as a Platform
- Strategies and instruments:
 - Scoreboard, indicators and decision thresholds
 - Dedicated task forces & coordinating devices
 - Transmedia communication strategy

A wicked problem

Elections and the COVID crisis: Catalan Parliament 2021



A big share of elections worldwide were held between the 1st and the 2nd wave

A wicked problem

- There is no definitive formulation of a wicked problem.
- Wicked problems have no stopping rule.
- Solutions to wicked problems are not true-or-false, but better or worse.
- There is no immediate and no ultimate test of a solution to a wicked problem.
- Every solution to a wicked problem is a "one-shot operation".
- Wicked problems do not have an enumerable (or an exhaustively describable) set of potential solutions.
- Every wicked problem is essentially unique.
- Every wicked problem can be considered to be a symptom of another problem.
- The existence of a discrepancy representing a wicked problem can be explained in numerous ways.
- The social planner are liable for the consequences they generate.

The solutions

Splitting the problem into smaller parts

The **health** scenario

- Minimize the risk to vote
- Minimize the risk of taking part in the organization (esp. polling stations)

The **right to vote** scenario

- Everyone has to be able to vote, no exceptions
- Prevent abstention for non-political reasons (e.g. fear)

The **legitimacy** scenario

- Maximize transparency and consensus about the electoral process
- Minimize boycott to the electoral institution, intended and unintended

Open Government

The **transparency and open data** component

- All data open: health, budget, protocols, procedures, minutes of meetings... and also: doubts, dissensus, issues
- Minimize the risk of taking part in the organization (esp. polling stations)

The **participation** component

- G2G, political parties, citizens
- Active listening

The **collaboration** component

- Co-design
- Co-management

The Administration as a Platform

Protocols

- Polling stations and voting procedures
- COVID Office (i.e. protection)
- Electoral campaigning
- Institutional communication and ways of voting
- Parties' Table of Dialogue (political parties + government)

Tools for different profiles to foster autonomy and empowerment

Voters	Polling stations	Infected and disabled people	Elderly people
Local administrations	COVID Officers	Representatives of the Administration	Candidates Media

The instruments

Scoreboard, indicators and decision thresholds

Health scenarios for elections

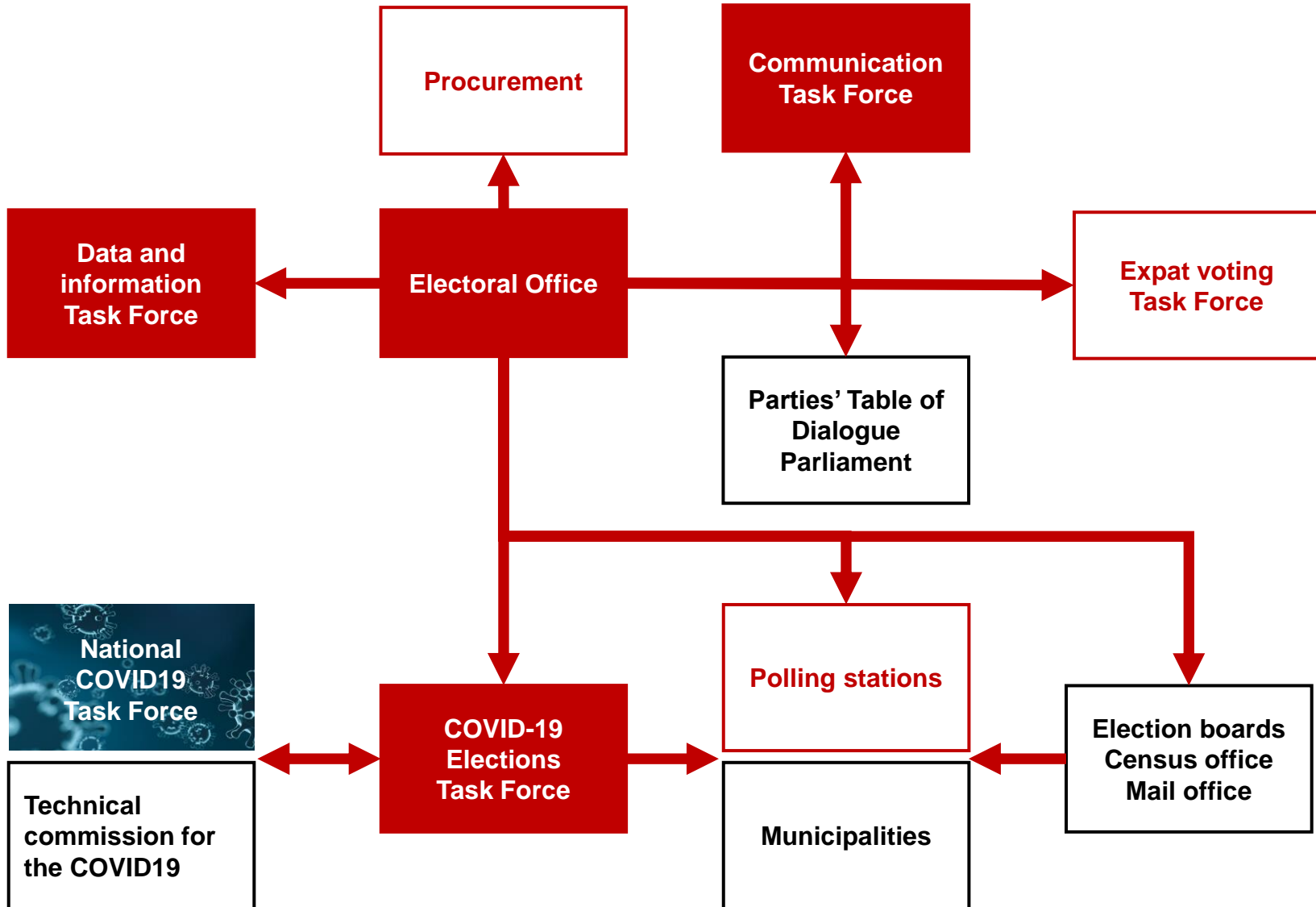
Scenario	EPC21-Normal	EPC21-Newnormal	EPC21-Local	EPC21-Stage4	EPC21-Tram3	EPC21-Stage2	EPC21-Stage1	EPC21-Stop	EPC21-Lockdown
Mobility	Progression according to								
Social Activity	<ul style="list-style-type: none"> Value of RT significantly and persistently varies 								
Voting issues	<ul style="list-style-type: none"> Number of hospitalizations significantly and persistently varies 								
Electoral Protocol COVID19									

Tasks and risks scoreboard

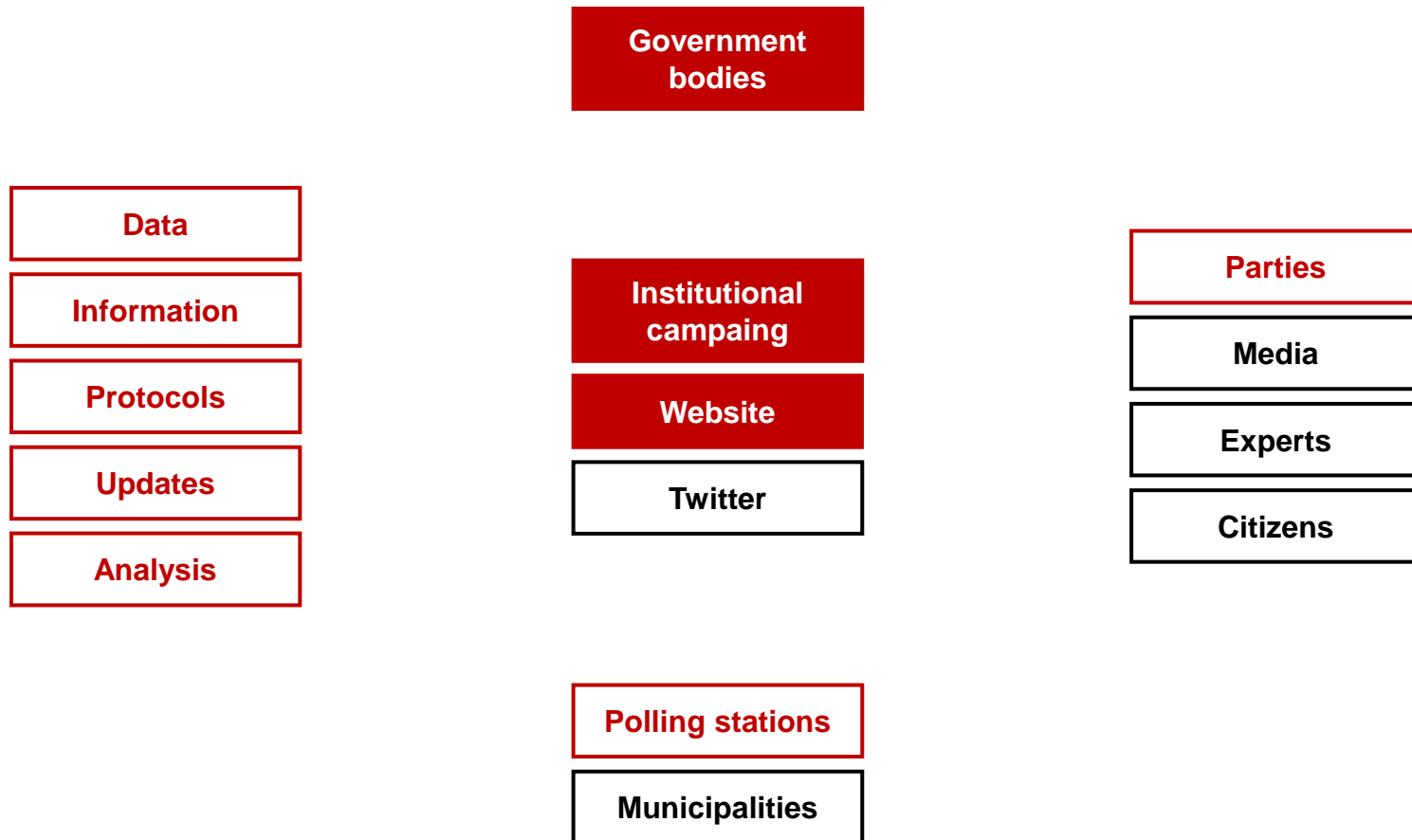
Scenario	Goal	Health	Voting rights	Legitimacy
Deliberation		Green	Yellow	Yellow
		White	Yellow	White
Passive suffrage		Green	Green	Yellow
		White	Yellow	White
Active suffrage		Green	Green	Yellow
		Light Green	Green	Red
		Light Green	Green	Yellow
		Light Green	Green	White
		Light Green	Red	White
		Green	White	White
		Yellow	White	White
Operations		Green	Green	Green
		Light Green	Green	Yellow
		Red	Light Green	White
		White	Light Green	White
Effectiveness		Green	Green	Green
		Yellow	White	Yellow
		Yellow	White	Yellow
		White	White	Red

Scenario	Goal	Health	Voting rights	Legitimacy
Deliberation		Green	Red	Suspend
Passive suffrage		Green	Red	Suspend
Active suffrage		Green	Green	Suspend
		Green	Green	Suspend
		Green	Green	Suspend
Operations		Green	Green	Suspend
Effectiveness		Suspend	Green	Suspend

Dedicated task forces & coordinating devices



Transmedia communication strategy



Last thoughts

Three main phases

- Design: be open and collaborative, name, frame
- Implement: work consensus, empower actors
- Explain: be defensive (i.e. protect both team and project)

Keys for legitimacy

- Plan in (much) advance, master the issue
- Set the pace, tone and level
- Radical transparency, become authority
- Be quick to advance the issues, leave no room for doubts
- Own the higher ground, leave no room for mis-/dis-information



Generalitat de Catalunya
**Escola d'Administració Pública
de Catalunya**

To cite this document:

Peña-López, I. (2022). *Ethics and legitimacy of institutions solving wicked problems: the Catalan elections during the COVID-19 crisis*. REDEM Workshop Reconstructing Democracy in Times of Crisis: A Voter-Centred Perspective. Strengthening Electoral Participation, 04/05/2022. Barcelona: Universitat Pompeu Fabra

http://ictlogy.net/presentations/20220504_ismael_pena-lopez_-_ethics_legitimacy_wicked_problems_elections_covid19.pdf

To contact the author:

ismael.pena@gencat.cat
@ictlogist



All the information in this document under a
Creative Commons license:
Attribution – Non Commercial
More information please visit
<http://creativecommons.org/licenses/by-nc/4.0/>